

# Access Control Basics And New Products

2019-10-25



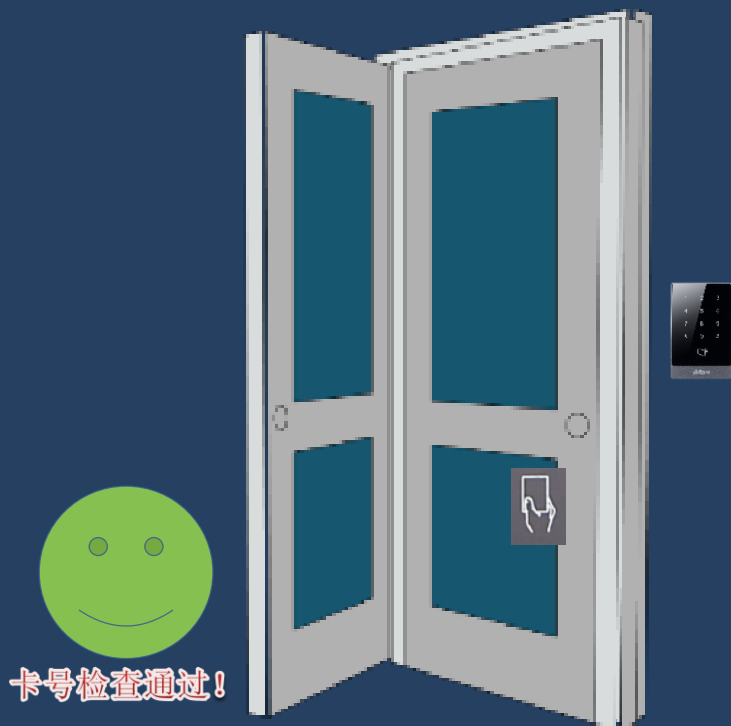
**01-Access Control Basics**

**02-Standalone Terminal**

**03-Entrance Barrier**



**CONTENT**



## Step 1--Person Identification

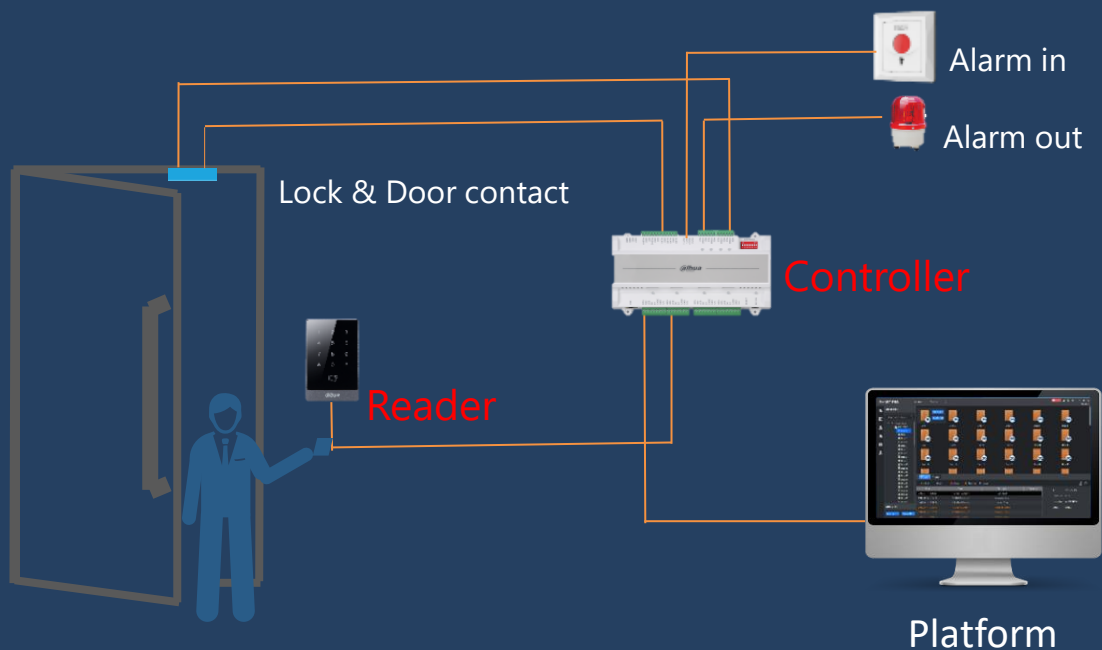
Through the reader that supports radio frequency identification or biometrics

## Step 2--Authority Verification

Through the controller

## Step 3—Unlock The Door

Through the electric lock



## Controller

The core of access control system, responsible for the processing and storage of various information, and control of some peripheral devices

## Reader

Read or write card information, or read biometric information

## Lock

The execution unit for unlocking and locking, and feedback the door state to the controller

## Software

Centralized management of access control systems, such as access control authority, event management, remote operations, etc.

Software and accessory		Protocol&Interface
Controller	Reader	RS485/Wiegand
	Lock/Exit button/alarm output	NO/NC
	Management software	TCP/IP





**01-Access Control Basics**

**02-Standalone Terminal**

**03-Entrance Barrier**



**CONTENT**

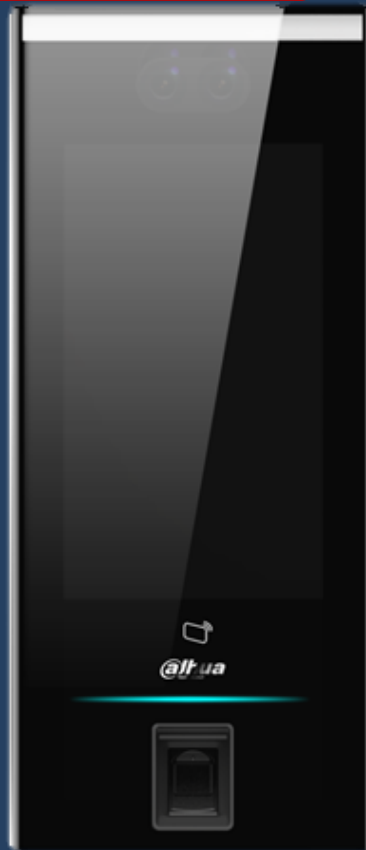
# ▶▶ Standalone Terminal



**Release Time: 31st December**



**DHI-ASI7213X**



**DHI-ASI7214X**

## Appearance

- 2.5D curved screen
- Ultra-thin design (32.5mm)
- Removable fingerprint module

## Outdoor

- IP65
- -30°-70°
- Outdoor screen design

## Performance

- 100,000 face capacity
- 10,000 fingerprint capacity
- Algorithm optimization (Less than 0.2s)

# X Face Recognition Terminal

**Release Time: 31th December**



**DHI-AS17223X-A**

## Appearance

- 2.5D curved screen
- Ultra-thin design (32.5mm)

## Outdoor

- IP65
- -30°-70°
- Outdoor screen design

## Performance

- 100,000 face capacity
- Algorithm optimization (Less than 0.2s)





**01-Access Control Basics**

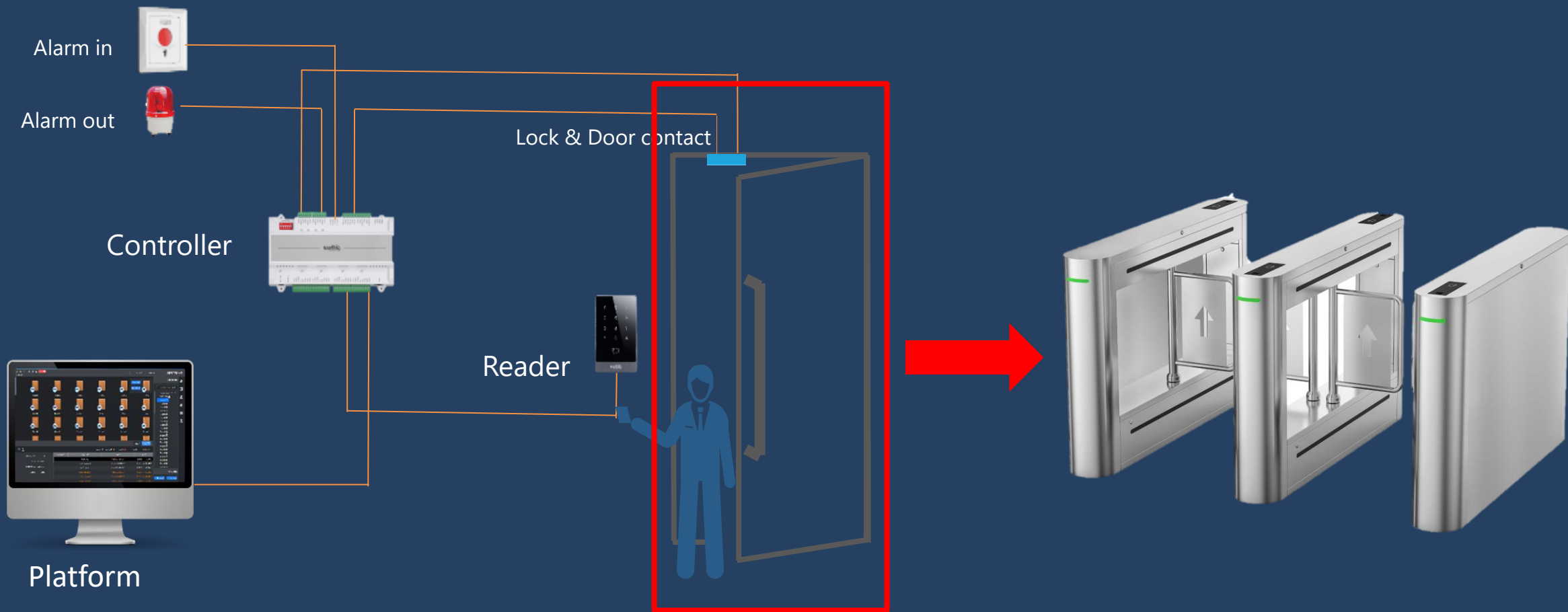
**02-Standalone Terminal**

**03-Entrance Barrier**



**CONTENT**

# Entrance Barrier Architecture



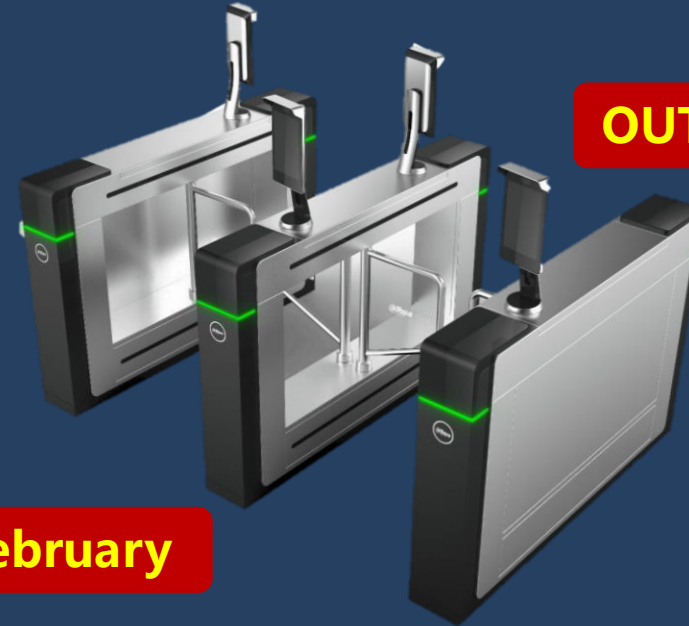
# ▶▶▶ High-end Indoor And Outdoor Swing Gate

**INDOOR**



**DHI-ASGB8xxX-L/R/D**

**OUTDOOR**



**DHI-ASGB8xxY-L/R/D**

**Release Time: 28th February**

## Features

- 5 million
- DC brushless servo motor
- 2 mm 304 stainless steel
- Active infrared curtain(20 pairs)
- Integrated control board

## Scenes

High-end office buildings / Libraries and other venues / Residential areas / Campuses / Industrial enterprise parks

SUMMARY **2019**

**Thanks.**